



Certificate of Analysis

Biogenica Labs • Analytical Services Division
ISO/IEC 17025-aligned testing • GMP-grade analysis

Accession Number	Client	Sample Code	Received Date	Reported Date
AC-KLW0001-2604	Amino Club	AM-KLW0001	2026-04-05	2026-04-12

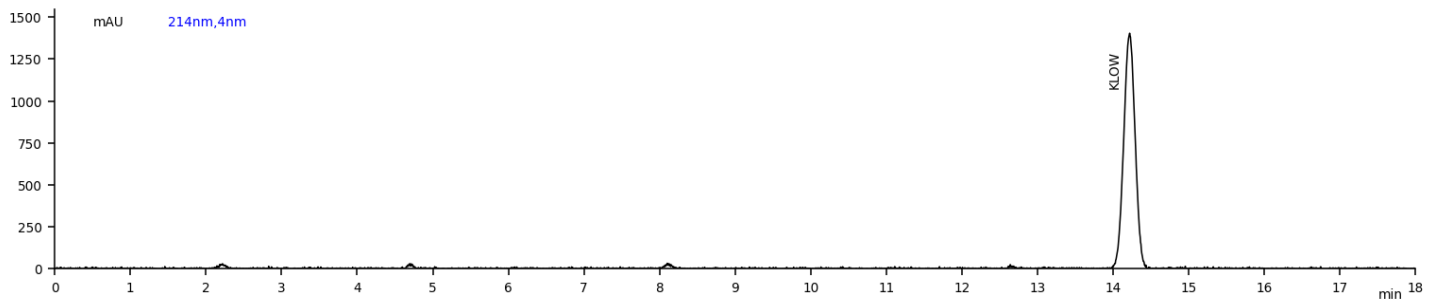
Product	KLOW	Lot Number	KLW0001
Variant	80MG	Net Content	81.47 mg
Label Strength	80 mg	Purity (HPLC, combined)	99.523%
Composition	KPV (20 mg), GHK-Cu (20 mg), BPC-157 (20 mg), TB-500 (20 mg)		
Identity Confirmation	Conforms (MS, per component)	Formulation Type	Multi-component research blend

ANALYTICAL METHODS • RP-HPLC (214 nm) | LC-MS (ESI+) | Appearance / Solubility

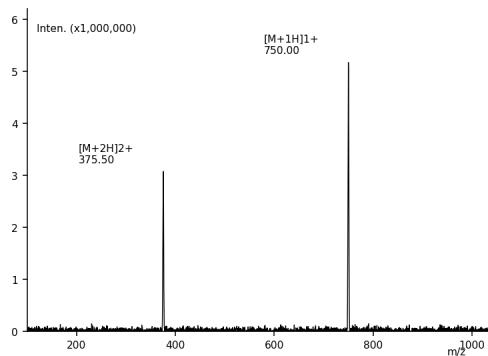
Mass Identification

Component	Identity Method	Identity Result	Purity (HPLC)
KPV	LC-MS (ESI+)	Conforms	99.523%
GHK-Cu	LC-MS (ESI+)	Conforms	99.523%
BPC-157	LC-MS (ESI+)	Conforms	99.523%
TB-500	LC-MS (ESI+)	Conforms	99.523%

HPLC Chromatogram — Purity 99.523%



Mass Spectrum (LC-MS, ESI+)



Released by Biogenica Labs

Tested and approved in accordance with internal quality control procedures.

Date of Release: April 12, 2026

Biogenica Labs

241 Molnar Dr, Elmwood Park, NJ 07407, USA

COA No.

BG-KLW0001-2604

Document Revision: 01

Issued: 04/12/2026 • Biogenica Labs

support@biogenicalabs.com