

## ILS Laboratories

8222 Vickers St, Suite 106, San Diego, CA 92111  
(619) 329-3999 | ils-lab.com

## Cagrilintide - 10mg

Tested for: Amino Club  
aminoclub.com

**PASS**

COA #: **COA-2026-ONLHYO**  
Lot Number: **CAG0001**  
Accession #: **ACC-2026-3150**  
Concentration: **10mg**  
Sample Matrix: **Lyophilized**

Method: **Full QC Panel**  
Analysis Date: **05/29/2026**  
Appearance: **Good**  
Volume: **3mL**  
Received: **05/22/2026**



Scan to verify authenticity at ils-lab.com

Identity: **Cagrilintide**      Peptide Purity: **99.04%**

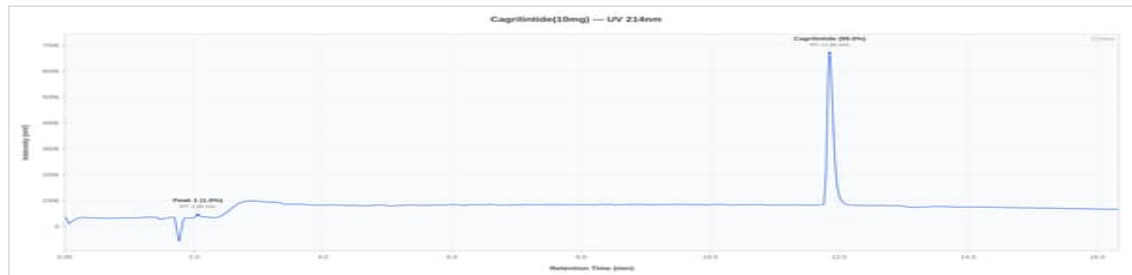


Cagrilintide 10mg - CAG0001

### Purity & Quant (HPLC)

Analyte	Specification	Result	Unit	Status
Peptide Purity (HPLC)	>= 95.0%	<b>99.04%</b>	%	<b>PASS</b>
Net Peptide Content	Report Only	<b>10.42</b>	mg	N/A
Identity (ID)	Cagrilintide	<b>Confirmed</b>	-	<b>PASS</b>

### HPLC Chromatogram



Representative chromatogram, Dedicated V0 (98.79% purity, closest to batch mean of 98.92%)

### HPLC Conformity Testing Results (2 samples tested)

Sample	Purity	NPC	ID	Result
Dedicated V0	98.79%	10.25 mg	Confirmed	<b>PASS</b>
Conformity V1	99.04%	10.42 mg	Confirmed	<b>PASS</b>
Mean	<b>98.92%</b>	<b>10.34 mg</b>	—	—
Std Dev	<b>0.1250%</b>	<b>0.0850 mg</b>	—	—




**Dr. Greg Kalyuzhny**  
Lab Director  
5/29/2026

COA #: **COA-2026-ONLHYO**  
Access Code: **IM4V-9HE**  
Verify: [portal.ils-lab.com/verify/aJQ\\_HVrE2QFbb8gy](https://portal.ils-lab.com/verify/aJQ_HVrE2QFbb8gy)  
Issued: 5/29/2026

## ILS Laboratories

8222 Vickers St, Suite 106, San Diego, CA 92111  
(619) 329-3999 | ils-lab.com

## Cagrilintide - 10mg

**PASS**

**Tested for: Amino Club**  
aminoclub.com

COA #:	<b>COA-2026-ONLHYO</b>	Method:	<b>Full QC Panel</b>
Lot Number:	<b>CAG0001</b>	Analysis Date:	<b>05/29/2026</b>
Accession #:	<b>ACC-2026-3150</b>	Appearance:	<b>Good</b>
Concentration:	<b>10mg</b>	Volume:	<b>3mL</b>
Sample Matrix:	<b>Lyophilized</b>	Received:	<b>05/22/2026</b>



Scan to verify  
authenticity at ils-lab.com

### Heavy Metals Analysis (ICP-MS)

Test	Specification	Result	Status
<b>Arsenic (As)</b>	NMT 1.5 ppm	<i>Not Detected</i>	<b>PASS</b>
<b>Cadmium (Cd)</b>	NMT 0.5 ppm	<i>Not Detected</i>	<b>PASS</b>
<b>Chromium (Cr)</b>	NMT 10 ppm	<i>Not Detected</i>	<b>PASS</b>
<b>Mercury (Hg)</b>	NMT 1.5 ppm	<i>Not Detected</i>	<b>PASS</b>
<b>Lead (Pb)</b>	NMT 1 ppm	<i>Not Detected</i>	<b>PASS</b>

### Sterility Testing (PCR)

Test	Specification	Result	Status
<b>Sterility (PCR)</b>	No Growth	<b>No Growth</b>	<b>PASS</b>

### Endotoxin Testing (USP <85>)

Test	Specification	Result	Status
<b>Endotoxin (USP &lt;85&gt;)</b>	Report Result	<b>NMT 0.05 EU/mL</b>	<b>Reported</b>

*About this result: Endotoxin is reported as a quantitative value. Acceptable limits vary by product type and matrix, so no universal pass/fail threshold applies to RUO products. This result is below commonly referenced endotoxin thresholds.*

### Notes & Methodology

- Date Tested: 05/29/2026. Methods: Purity & Quant (HPLC).
- The sample was confirmed to be Cagrilintide by HPLC. Identification by chromatographic retention time comparison with a reference standard.
- Elemental impurities analyzed by ICP-MS per USP <233> methodology. Acceptance criteria are internal laboratory quality screening limits for research-use materials and do not represent evaluation against any specific pharmacopeial monograph or product specification.
- Endotoxin tested per USP <85> kinetic turbidimetric method. Acceptance criteria per client specification.
- Peptide purity determined by RP-HPLC area normalization at 214 nm. Value represents the percentage of the target peptide relative to all peptide-related peaks. Non-peptide process-related impurities, if detected, are excluded from the calculation.
- Chromatogram shown is representative: Dedicated V0 (98.79% purity, closest to batch mean of 98.92%).




**Dr. Greg Kalyuzhny**  
Lab Director  
5/29/2026

COA #: **COA-2026-ONLHYO**  
Access Code: **IM4V-9HE**  
Verify: [portal.ils-lab.com/verify/aJQ\\_HVrE2QFbb8gy](https://portal.ils-lab.com/verify/aJQ_HVrE2QFbb8gy)  
Issued: 5/29/2026